



Link-Belt®
Centrik-Lok® CL Series
Normal Duty Bearings

Trusted Brands. Reliable Performance. Customer-focused Solutions.





Rexnord proudly introduces an improved design for concentric locking mounted ball bearings. Utilized in demanding applications that require superior holding force, concentric locking provides straightforward installation for longer bearing life and performance.

Link-Belt's new Centrik-Lok® CL design features eight gripping tabs to solve the toughest shaft mounting problems. Its unique split collar design utilizes a high-strength socket head cap screw for secure and easy installation. The locking collar yields superior axial holding force, which is 20% greater than the next best competitor.

Features and Benefits

Concentric Eight Tab Design

- 360° concentricity for high speed/high vibration applications
- Shaft marring: minimal to none
- Will not fracture during installation

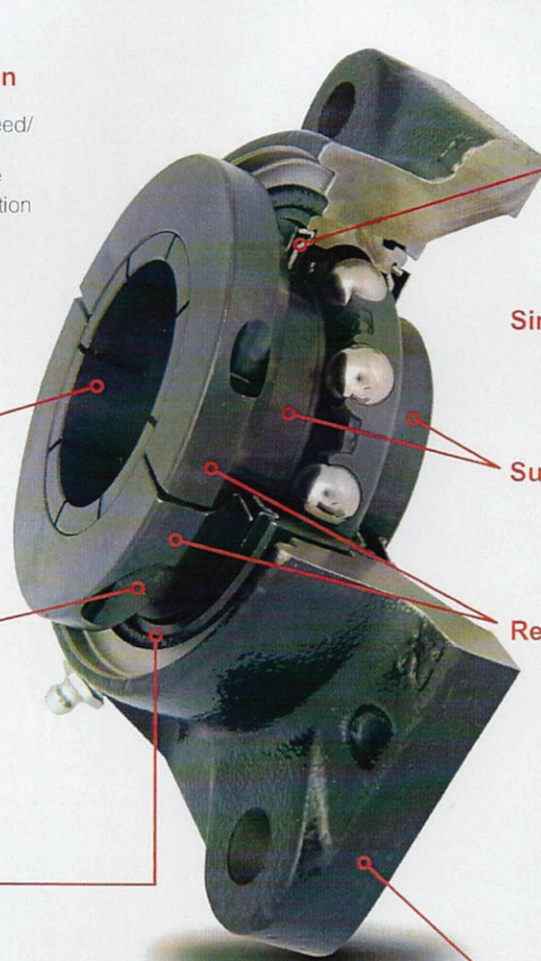


High Strength Socket Head Cap Screws

- Deep pockets to minimize socket marring
- Industry standard cap screws

Anti-Rotation Pin

- Prevents the turning of the OR in high vibration applications



Single Lip Seal with Flinger

- Optional Steel Labyrinth (speed) and triple lip seals (contamination)

Superior Finished Raceways

- Precision ground and super-finished; cool running and quiet

Retained Two-Piece Collar Design

- Maximum holding force on undersized shafting (up to $-0.004''$)
- Unique retention feature keeps locking collar attached to bearing during installation
- 20% greater gripping power than comparable bearings
- Simple installation

Corrosion Resistant Black Powder Coated Housing Unit

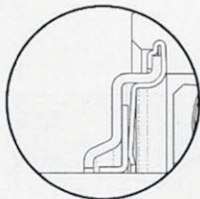
Seal Types

All bearing type seals are crimped tightly in the bearing outer rings with steel flingers and cannot be blown out during relubrication.



Seal Type "N" (Single Lip Contact)

Type N lip seals have the same contoured external flinger for maximum lip protection and a full land riding lip for grease retention and dirt exclusion. The type N seal rides on a precision ground surface of the bearing inner ring for smooth operation and tightness.



Seal Type "H" (Labyrinth)

Multi-labyrinth seal with contoured external flinger is an excellent all-purpose, low friction seal for grease lubrication.



Seal Type "E3" (Triple Lip)

Triple lip seal is a tight, high-torque seal for ultimate dirt exclusion. It has an external flinger to protect the precision die molded lip members.

Load Ratings, Speed Limits

Size Code	Shaft Size (in)	Co Basic Static Capacity (lbs)	BDC Dynamic Capacity (lbs)	Approximate Speed Limit (rpm)*		
				N Seals	H Seals	E3 Seals
204	3/4"	1,480	2,450	7,500	10,000	---
205	1"	1,760	2,680	6,800	9,600	1,000
206	1 3/16"	2,530	3,720	5,600	8,000	---
207	1 7/16"	3,440	4,910	4,800	6,850	700
208	1 1/2"	4,460	5,550	4,500	6,000	650
209	1 3/4"	4,590	6,250	4,000	5,330	600
210	1 15/16"	5,220	6,600	3,600	4,800	550
211	2 3/16"	6,570	8,300	3,200	4,360	500
212	2 7/16"	8,080	10,030	3,000	4,000	450

*Single Lip (N), Labyrinth Clearance Seal (H), Triple Lip (E3).

Accommodates Commercial Grade Shafting

- 1/2" – 2" nominal to -.003"
- 2 1/8" – 2 7/16" nominal to -.004"

General Bearing Information

- Races – precision-ground and super-finished
- Housings – powder-coated cast iron
- Grease – multi-purpose lithium complex
- Black Oxide – corrosion resistance

Housing Options

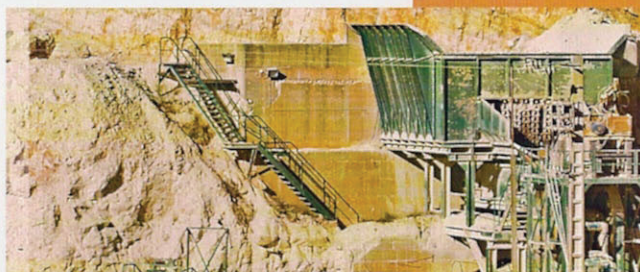
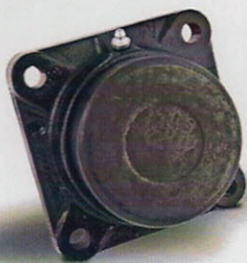
- Pillow block
- Flange: 2-bolt and 4-bolt flange
- Take-up

Shaft Sizes

- 1/2" – 2 7/16"

End Cap

- Press Fit



Industries served

Aggregates
Agriculture
Air Handling
Construction
Package Handling
Shipping

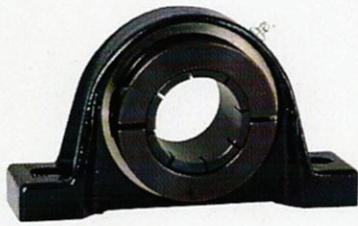
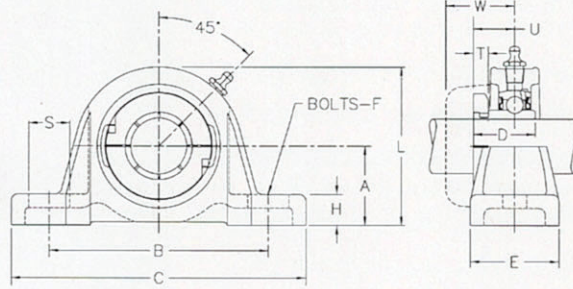


Photo Shows a 2-Bolt Ball Bearing Pillow Block Unit



Product Features

- Corrosion resistant powder coating
- Cast iron housing
- Broad range of sealing options
- Wide inner ring for increased shaft stability
- Centrik-Lok CL shaft locking device
- Alignable and relubricatable
- Black Oxide

P3CL200 Dimensions

Size Code	Shaft Diameter	Part Number	A	B	C	D	E	F	H	L	M	S	T	U	W	Weight (lbs/kg)
203	1/2	P3CL208N	1-3/16	3-1/2	4-5/8	1-13/64	1-1/2	3/8	1/2	2-11/32	1-5/8	3/4	.0281	3/4	1-3/16	1.4
	5/8	P3CL210N														
	11/16	P3CL211N														
203	17.00	P3CL2M17N	30.16	88.90	117.50	30.48	38.10	10.00	12.70	59.50	41.40	19.00	.713	19.05	30.23	0.64
204	1/2	P3CL2B08N	1-5/16	3-7/8	5-1/8	1-11/32	1-1/2	3/8	1/2	2-19/32	1-59/64	11/16	0.345	27/32	1-21/64	1.5
	3/4	P3CL212N														
204	20.00	P3CL2M20N	33.34	98.40	130.20	34.04	38.10	10.00	12.70	65.90	48.77	17.50	8.76	21.34	33.78	0.68
205	7/8	P3CL214N	1-7/16	4	5-3/8	1-3/8	1-5/8	3/8	9/16	2-7/8	2-5/64	11/16	0.345	13/16	1-5/16	1.9
	15/16	P3CL215N														
	1	P3CL216N														
205	25.00	P3CL2M25N	36.51	101.60	136.50	34.80	41.30	10.00	14.30	73.00	52.83	17.50	8.76	20.57	33.27	0.86
206	1	P3CL2B16N	1-11/16	4-5/8	6-5/16	1-9/16	1-3/4	1/2	11/16	3-5/16	2-15/32	15/16	0.345	61/64	1-15/32	2.8
	1-1/8	P3CL218N														
	1-3/16	P3CL219N														
	1-1/4	P3CL2E20N														
206	30.00	P3CL2M30N	42.86	117.50	106.30	39.62	44.40	12.00	17.50	84.10	62.48	23.80	8.76	24.13	37.34	1.27
207	1-3/16	P3CL2B19N	1-7/8	4-15/16	6-3/8	1-3/4	1-7/8	1/2	13/16	3-11/16	2-7/8	13/16	0.437	1-3/32	1-37/64	3.6
	1-1/4	P3CL220N														
	1-3/8	P3CL222N														
	1-7/16	P3CL223N														
207	35.00	P3CL2M35N	47.62	125.40	161.90	44.45	47.60	12.00	20.60	93.70	73.15	20.60	11.10	27.69	40.13	1.63
208	1-7/16	P3CL2B23N	2	5-3/8	7-1/16	1-15/16	1-7/8	1/2	13/16	4	3-3/64	15/16	0.437	1-7/32	1-43/64	4.7
	1-1/2	P3CL224N														
	1-5/8	P3CL2E26N														
208	40.00	P3CL2M40N	50.80	136.50	179.40	49.28	47.60	12.00	20.60	101.60	77.47	23.80	11.10	30.73	42.42	2.13
209	1-1/2	P3CL2B24N	2-1/8	5-5/8	7-1/4	1-61/64	2	1/2	13/16	4-5/16	3-17/64	7/8	0.437	1-13/64	1-11/16	5.3
	1-5/8	P3CL226N														
	1-11/16	P3CL227N														
	1-3/4	P3CL228N														
209	45.00	P3CL2M45N	53.98	142.90	184.20	49.53	50.80	12.00	20.60	109.50	82.80	22.20	11.10	30.48	42.67	2.40
210	1-11/16	P3CL2B27N	2-1/4	6-3/16	7-7/8	2-5/64	2-1/8	5/8	7/8	4-1/2	3-5/8	15/16	0.562	1-21/64	1-51/64	6.6
	1-3/4	P3CL2B28N														
	1-7/8	P3CL230N														
	1-15/16	P3CL231N														
	2	P3CL2E32N														
210	50.00	P3CL2M50N	57.15	157.20	200.00	52.58	54.00	16.00	22.20	114.30	92.20	23.80	14.27	33.53	45.72	3.00
211	1-15/16	P3CL2B31N	2-1/2	6-3/4	9-1/16	2-15/64	2-3/8	5/8	1	5	3-29/32	1-5/16	0.562	1-13/32	1-15/16	7.8
	2	P3CL232N														
	2-3/16	P3CL235N														
	2-1/4	P3CL2E36N														
211	55.00	P3CL2M55N	63.50	171.40	230.20	56.90	60.30	16.00	25.40	127.00	99.31	33.30	14.27	35.56	49.28	3.54
212	2-3/16	P3CL2B35N	2-11/16	7-1/2	9-1/2	3-1/16	2-1/2	5/8	1-1/8	5-3/8	4-11/16	1-1/16	0.562	2-1/16	2-13/32	11.0
	2-1/4	P3CL236N														
	2-3/8	P3CL238N														
	2-7/16	P3CL239N														
212	60.00	P3CL2M60N	68.26	190.50	241.30	77.72	63.50	16.00	28.60	136.50	119.13	27.00	14.27	52.32	60.96	5.00

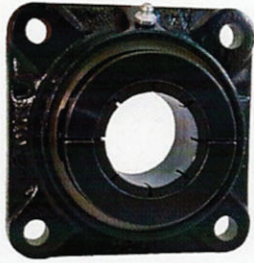
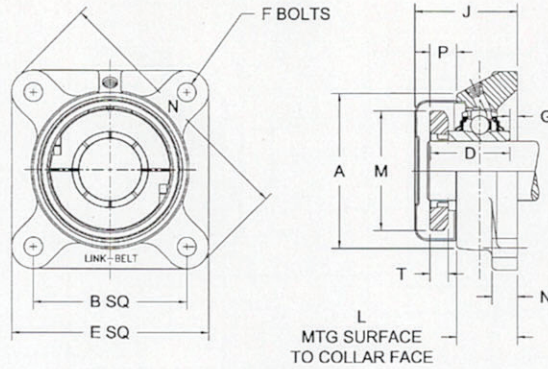


Photo Shows a 4-Bolt Ball Bearing Flanged Unit

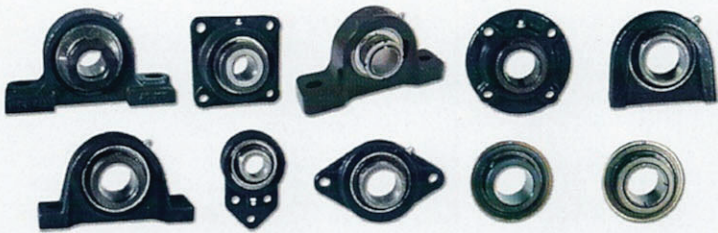


Product Features

- Corrosion resistant powder coating
- Cast iron housing
- Broad range of sealing options
- Wide inner ring for increased shaft stability
- Centrik-Lok CL shaft locking device
- Alignable and relubricatable
- Black Oxide

F3CL200 4-Bolt Dimensions

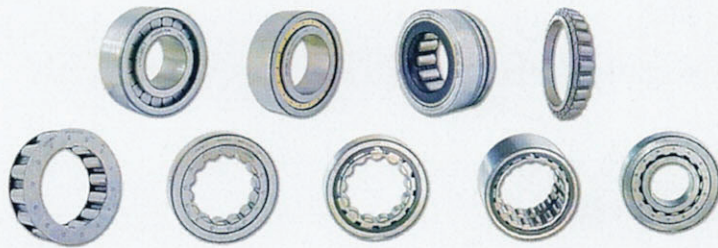
Size Code	Shaft Diameter	Part Number	B	L	A	D	E	F	G	H	J	M	N	P	Weight (lbs/kg)
203	1/2	F3CL208N	2 1/8	1 19/64	2 1/8	1 13/64	3	3/8	5/32	1/2	1 51/64	1 5/8	3 7/8	1 1/32	1
	5/8	F3CL210N													
	1 1/16	F3CL211N													
203	17.00	F3CL2M17N	53.98	32.80	54.00	30.48	76.20	10.00	4.00	12.70	45.50	41.40	98.40	8.73	0.45
204	1/2	F3CL2B08N	2 1/2	1 9/16	2 7/16	1 11/32	3 3/8	3/8	13/64	9/16	2 1/16	1 59/64	4 13/32	3/8	1.5
	3/4	F3CL212N													
204	20.00	F3CL2M20N	63.50	39.90	61.90	34.04	85.70	10.00	5.20	14.30	52.30	48.77	111.90	9.53	0.68
205	7/8	F3CL214N	2 3/4	1 17/32	2 11/16	1 3/8	3 3/4	7/16	3/16	19/32	2 1/16	2 5/64	4 29/32	3/8	1.9
	15/16	F3CL215N													
	1	F3CL216N													
205	25.00	F3CL2M25N	69.85	38.90	68.30	34.80	95.20	10.00	4.80	15.10	52.30	52.83	124.60	9.53	0.86
206	1	F3CL2B16N	3 1/4	1 47/64	3 3/16	1 9/16	4 1/4	7/16	11/64	19/32	2 1/4	2 15/32	5 19/32	27/64	3.1
	1-1/8	F3CL218N													
	1-3/16	F3CL219N													
	1-1/4	F3CL2E20N													
206	30.00	F3CL2M30N	82.55	43.90	81.00	39.62	108.00	10.00	4.40	15.10	57.20	62.48	142.10	10.72	1.4
207	1-3/16	F3CL2B19N	3 5/8	1 29/32	3 5/8	1 3/4	4 5/8	1/2	5/32	5/8	2 25/64	2 7/8	6 1/8	1/2	3.9
	1-1/4	F3CL220N													
	1-3/8	F3CL222N													
	1-7/16	F3CL223N													
207	35.00	F3CL2M35N	92.08	48.30	92.1	44.45	117.50	12.00	4.00	15.90	60.70	73.15	155.60	12.70	1.75
208	1-7/16	F3CL2B23N	4	2 1/8	4	1 15/16	5 1/8	1/2	11/64	5/8	2 37/64	3 3/64	6 25/32	35/64	5
	1-1/2	F3CL224N													
	1-5/8	F3CL2E26N													
208	40.00	F3CL2M40N	101.60	53.90	101.60	49.28	130.2	12.00	4.40	15.90	65.50	77.47	172.20	13.72	2.25
209	1-1/2	F3CL2B24N	4 1/8	2 1/8	4 1/4	1 61/64	5 3/8	1/2	7/64	5/8	2 19/32	3 17/64	7 3/32	33/64	6.2
	1-5/8	F3CL226N													
	1-11/16	F3CL227N													
	1-3/4	F3CL228N													
209	45.00	F3CL2M45N	104.78	53.90	108.00	49.53	136.50	12.00	2.80	15.90	65.80	82.80	180.20	13.21	2.8
210	1-11/16	F3CL2B27N	4 3/8	2 23/64	4 1/2	2 5/64	5 5/8	1/2	13/64	3/4	2 53/64	3 5/8	7 7/16	5/8	6.9
	1-3/4	F3CL2B28N													
	1-7/8	F3CL230N													
	1-15/16	F3CL231N													
	2	F3CL2E32N													
210	50.00	F3CL2M50N	111.12	59.70	114.30	52.58	142.90	12.00	5.20	19.00	71.90	92.20	188.90	15.75	3.1
211	1-15/16	F3CL2B31N	5 1/8	2 9/16	4 15/16	2 15/64	6 3/8	5/8	5/16	29/32	3 5/64	3 29/32	8 1/2	5/8	8.9
	2	F3CL232N													
	2-3/16	F3CL235N													
	2-1/4	F3CL2E36N													
211	55.00	F3CL2M55N	130.18	65.00	125.40	56.90	161.90	16.00	7.90	23.00	78.20	99.31	215.90	15.75	4
212	2-3/16	F3CL2B35N	5 5/8	2 55/64	5 3/8	3 1/16	6 7/8	5/8	11/32	15/16	3 23/64	4 11/16	9 7/32	21/32	11.9
	2-1/4	F3CL236N													
	2-3/8	F3CL238N													
	2-7/16	F3CL239N													
212	60.00	F3CL2M60N	142.88	72.60	136.50	77.72	174.60	16.00	8.70	23.80	85.30	119.13	234.20	16.76	5.35



Link-Belt and MB Mounted Ball Bearings



Rex® and Link-Belt Mounted Roller Bearings



Link-Belt Cylindrical Roller Bearings



Duralon® and Tufite® Filament Bearings

For more information about Rexnord products, programs, and services, contact your Rexnord Customer Focus Team today at 866-REXNORD (866-739-6673).



Rexnord Bearing Group

7601 Rockville Road, Indianapolis, IN 46214

P: 317-273-5500 • F: 317-273-5620

www.rexnord.com

©Rexnord Industries, LLC, (BR1-001) 0811

